



Jemena Gas Networks (NSW) Ltd

Part 10 Prescribed information requirements



An appropriate citation for this paper is:

Part 10 Prescribed information requirements

Printed or downloaded copies of this document are deemed uncontrolled.

History

| Rev No | Date | Description of changes | Author |
|--------|------------------|------------------------|--------|
| 1 | 22 December 2023 | Original Version | JGN |

Owning Functional Area

| | |
|--------------------------|--------------------------|
| Business Function Owner: | Asset and Operations Gas |
|--------------------------|--------------------------|

Contents

| | | |
|-----------|---|-----------|
| 1. | Purpose and Scope..... | 1 |
| 2. | Part 10 Prescribed Transparency Information. Obligation to publish information (Rule 101A) | 2 |
| 3. | Part 10: Rule 101B (2) Service and access information | 3 |
| 3.1 | Rule 101B(2)(c)(ii) Locations along the pipeline where the service provider takes delivery of natural gas | 4 |
| 3.2 | Rule 101B(2)(c)(iii) A schematic map shows the pipeline, marking the gas delivery points and service coverage areas. | 5 |
| 3.3 | Rule 101B(2)(d) Any technical or physical characteristics of the pipeline that may affect access to or use of the pipeline or the price for pipeline services provided by means of the pipeline | 9 |
| 3.4 | Rule 101B(2)(e) policies of the service provider that may affect access to or use of the pipeline or the price for pipeline services provided by means of the pipeline | 10 |
| 3.5 | Rule 101B (2)(f-h) | 10 |
| 4. | Part 10: Rule 101B(3) Service and access information | 11 |
| 4.1 | Rule 101B(3)(a) Service description and locational limitations..... | 11 |
| 4.2 | Rule 101B(3)(b) Priority ranking of services | 11 |
| 5. | Part 10: Rule 101B(4) Service and access information | 12 |
| 5.1 | Rule 101B(4)(b)(i) daily flow data..... | 12 |
| 5.2 | Rule 101B(4)(b)(ii) hourly flow data..... | 12 |
| 5.3 | Rule 101B(4)(b)(iii) minimum inlet and minimum outlet pressures over each hour..... | 13 |
| 5.4 | Rule 101B(4)(b)(iv) static table or chart showing the maximum flow rate of the entry or exit point against pressure | 13 |
| 5.4.1 | Southern Trunk (License 2) Mt Keira TRS | 13 |
| 5.4.2 | Central Trunk (License 1) Bingara Gorge TRS | 14 |
| 5.4.3 | Central Trunk (License 1) Appin BHP Tower Colliery POTS..... | 14 |
| 5.4.4 | Central Trunk (License 1) Campbelltown TRS | 15 |
| 5.4.5 | Central Trunk (License 1) West Hoxton TRS | 15 |
| 5.4.6 | Central Trunk (License 1) West Hoxton SPL TRS..... | 16 |
| 5.4.7 | Central Trunk (License 1) Horsley Park TRS | 16 |
| 5.4.8 | Northern Trunk (License 3, 7, 8) Eastern Creek TRS | 17 |
| 5.4.9 | Northern Trunk (License 3, 7, 8) Plumpton TRS | 17 |
| 5.4.10 | Northern Trunk (License 3, 7, 8) Windsor TRS | 18 |
| 5.4.11 | Northern Trunk (License 3, 7, 8) Maroota POTS..... | 18 |
| 5.4.12 | Northern Trunk (License 3, 7, 8) Gosford TRS..... | 19 |
| 5.4.13 | Northern Trunk (License 3, 7, 8) Warnervale POTS..... | 19 |
| 5.4.14 | Northern Trunk (License 3, 7, 8) Wyong TRS | 20 |
| 5.4.15 | Northern Trunk (License 3, 7, 8) Wyee POTS..... | 20 |
| 5.4.16 | Northern Trunk (License 3, 7, 8) Morisset POTS | 21 |
| 5.4.17 | Northern Trunk (License 3, 7, 8) Minmi POTS | 21 |
| 5.4.18 | Northern Trunk (License 3, 7, 8) Hexham TRS | 22 |
| 5.4.19 | Northern Trunk (License 3, 7, 8) Kooragang Island TRS | 22 |
| 5.4.20 | Northern Trunk (License 3, 7, 8) NGSF Hexham Meter Set..... | 23 |
| 6. | Part 10: Rule 101B(5) Service and access information | 24 |
| 6.1 | Rule 101B(5)(a) Outlook on firm capacity for each month in the next 36 months..... | 24 |
| 6.2 | Rule 101B(5)(b) Matters affecting capacity for each month in the next 12 months..... | 25 |
| 6.3 | Rule 101B(5)(c) Other limitations or constraints on pipeline service availability | 25 |
| 7. | Part 10: Rule 101C Standing terms..... | 26 |
| 7.1 | Rule 101C(1) Standing terms | 26 |
| 8. | Part 10: Rule 101D Financial information, historical demand information and cost allocation methodology | 27 |
| 9. | Part 10: Rule 101E Actual prices payable information | 28 |
| 9.1 | Rule 101E(1) Actual prices – Non-Reference Services | 29 |
| 9.2 | Rule 101E(2) User information – Updates | 29 |

| | | |
|-----|--|----|
| 9.3 | Rule 101E(3) User information – Reference Services | 29 |
|-----|--|----|

1. Purpose and Scope

The purpose of this document is to provide service and access information required under the National Gas Rules (**NGR**) for the gas distribution network (**Network**) owned by Jemena Gas Networks (NSW) Limited (**JGN**).

In this document, relevant NGR requirements are quoted as per the below text. Where NGR clauses do not impact the information disclosure requirement, they are paraphrased and annotated appropriately.

Part 10 Prescribed Transparency Information. Obligation to publish information (Rule 101A)

Rule 101A (1): Subject to subrule (5), a service provider must prepare, publish and maintain:

- a) the service and access information specified in rule 101B; and

JGN's resources and responses are listed below each NGR rule or subrule. Where particular requirements are identified in the NGR, but not required of JGN, the relevant rule is quoted and marked as not applicable, with appropriate reasons provided where required.

2. Part 10 Prescribed Transparency Information. Obligation to publish information (Rule 101A)

Rule 101A (1): Subject to subrule (5), a service provider must prepare, publish and maintain:

- b) the service and access information specified in rule 101B; and
- c) standing terms in accordance with rule 101C; and
- d) financial information, historical demand information and a cost allocation methodology in accordance with rule 101D; and
- e) actual prices payable information in accordance with rule 101E,

in accordance with the NGL, this Part and the pipeline information.

For information as to these requirements, refer below.

3. Part 10: Rule 101B (2) Service and access information

Rule 101B(2) Service and access information

(2) The pipeline information in respect of a pipeline comprises:

- (a) the classification of the pipeline as a transmission or a distribution pipeline; and
- (b) for a transmission pipeline – *Not applicable*
- (c) for a distribution pipeline:
 - (i) subject to subrule (6), the quantity of natural gas that can be transported through each gate station on the distribution pipeline in any 24 hour period; and
 - (ii) the details of all points on the pipeline where the service provider takes delivery of natural gas; and
 - (iii) a schematic map of the pipeline that shows the location on the pipeline of the points referred to in subparagraph (ii) and the geographic limits of the areas served by the pipeline; and
- (d) any technical or physical characteristics of the pipeline that may affect access to or use of the pipeline or the price for pipeline services provided by means of the pipeline; and
- (e) policies of the service provider that may affect access to or use of the pipeline or the price for pipeline services provided by means of the pipeline which may include:
 - (i) queuing requirements; and
 - (ii) a receipt or delivery point change policy; and
 - (iii) a metering and measurement policy; and
 - (iv) for a distribution pipeline – a balancing policy.
- (f) – (h) *Renewable Gas clauses to be confirmed when promulgated*

Under Rule 101B(2)(a), all pipelines managed by JGN are classified as distribution pipelines. Rule 101B(2)(b) only applies to transmission pipelines and is therefore not applicable.

Under Rule 101B(2)(c), the information for a distribution pipeline consists of three components:

- First, the quantity of natural gas that can be transported through each gate station within a 24-hour period.
- Second, the locations along the pipeline where the service provider receives natural gas.
- Finally, a schematic map depicting the pipeline, highlighting the specific points where natural gas is received, and outlining the geographic boundaries of the areas served by the pipeline.

Information required under Rule 101B(2)(d) and (e), is generally contained in the JGN Access Arrangement as indicated below.

Rule 101B(2)(c)(i) quantity of natural gas that can be transported through each gate station. This is addressed in Table 1 below.

3.1 Rule 101B(2)(c)(ii) Locations along the pipeline where the service provider takes delivery of natural gas

Table 1: Pipeline delivery points

| | Receipt point details | | Estimate quantity of gas that can be transported through station (TJ/24 hours) |
|------------------------------|-----------------------|-------------------------------|--|
| | Gate station | Upstream pipeline/facility | |
| Large distribution pipelines | Wilton-APA | Moomba Sydney Pipeline System | 15.200 |
| | Wilton-EGP | Eastern Gas Pipeline | 6.250 |
| | Horsley Park | Eastern Gas Pipeline | 6.875 |
| | Albion Park | Eastern Gas Pipeline | 0.760 |
| | Port Kembla | Eastern Gas Pipeline | 2.014 |
| | Hexham (NGSF) | Tomago Hexham Pipeline | 5.000 |
| | Tomago (NGSF) | NGSF | 0.208 |
| Regional networks | Bargo | Moomba Sydney Pipeline System | 0.194 |
| | Bathurst | | 0.456 |
| | Blayney | | 0.095 |
| | Boorowa | | 0.036 |
| | Bowral | | 0.361 |
| | Coolamon | | 0.008 |
| | Cootamundra | | 0.194 |
| | Cowra | | 0.144 |
| | Dubbo | | 0.380 |
| | Dubbo West | | 0.038 |
| | Forbes | | 0.062 |
| | Ganmain | | 0.011 |
| | Goulburn | | 0.338 |
| | Junee | | 0.042 |
| | Leeton | | 0.152 |
| | Lithgow | | 0.213 |
| | Marulan | | 0.346 |
| | Millthorpe | | 0.013 |
| | Moss Vale | | 0.532 |
| | Murrumbidgee | | 0.019 |
| | Narrandera | | 0.042 |

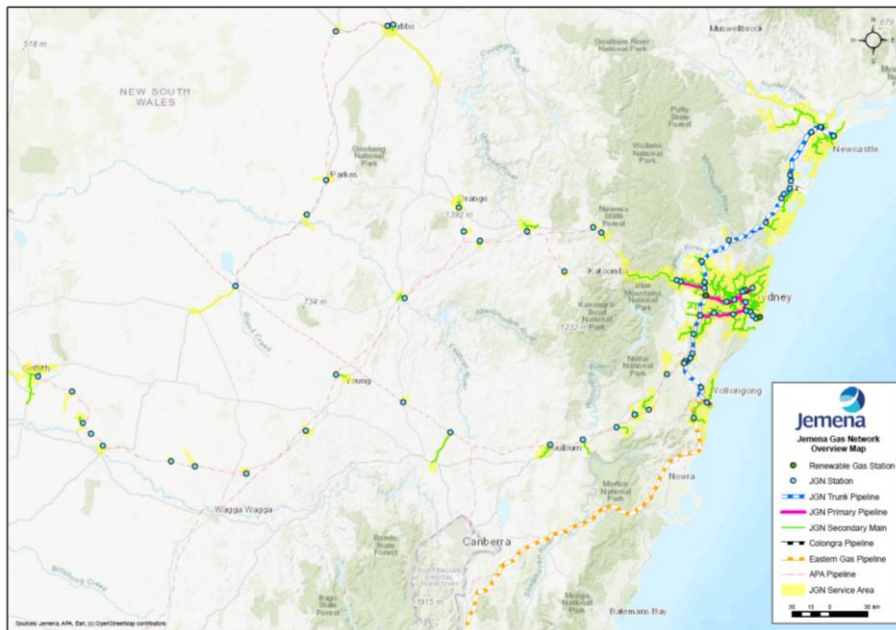
| | Receipt point details | | Estimate quantity of gas that can be transported through station (TJ/24 hours) |
|--|-----------------------|----------------------------|--|
| | Gate station | Upstream pipeline/facility | |
| | Narromine | | 0.038 |
| | Oberon | | 0.278 |
| | Orange | | 0.456 |
| | Parkes | | 0.096 |
| | Rockdale | | 0.038 |
| | Sally's Corner | | 0.032 |
| | Wallerawang | | 0.015 |
| | West Wyalong | | 0.038 |
| | Yass | | 0.049 |
| | Yoogali (Griffith) | | 0.371 |
| | Young | | 0.346 |

Table 1 was last updated on 17 November 2023.

3.2 Rule 101B(2)(c)(iii) A schematic map shows the pipeline, marking the gas delivery points and service coverage areas.

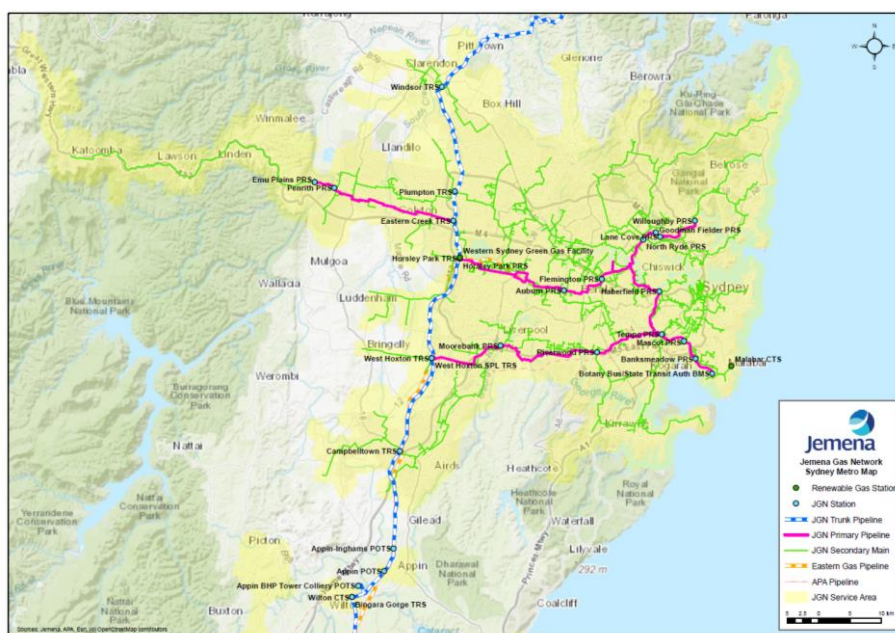
The following schematic maps have been included to show the areas where the distribution pipelines provide service coverage and the delivery points to those areas. Shown are first a NSW map, then a Sydney metropolitan, Hunter/Central Coast and Illawarra maps, then maps of JGN regional NSW coverage.

Figure 1: JGN Overall NSW



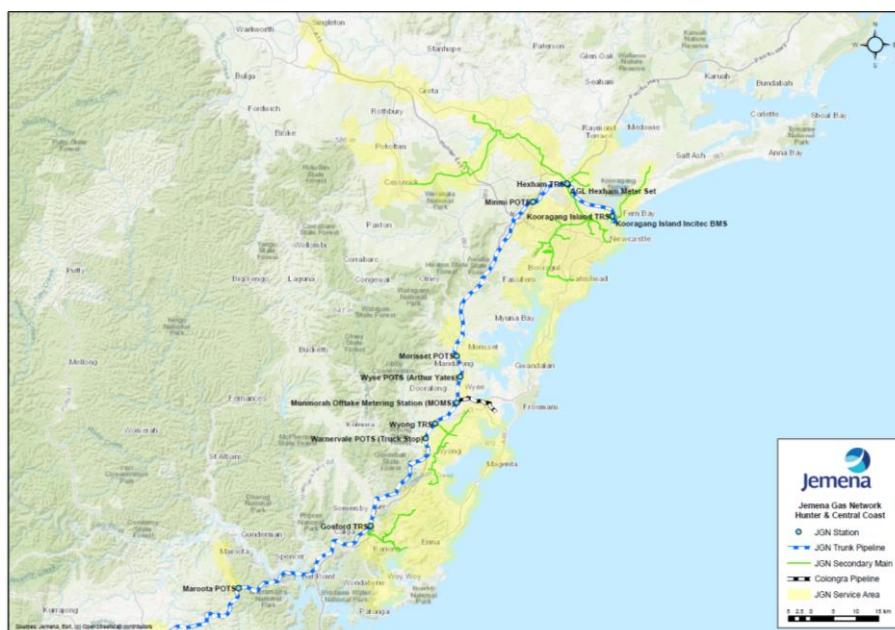
Last updated 1 December 2023

Figure 2: JGN Sydney Metropolitan



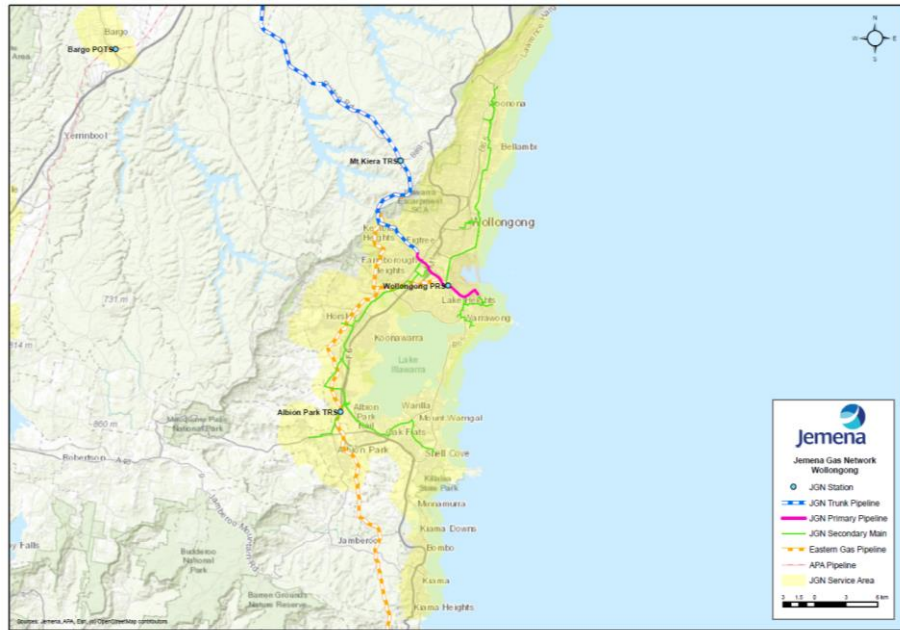
Last updated 1 December 2023

Figure 3 JGN Hunter and Central Coast



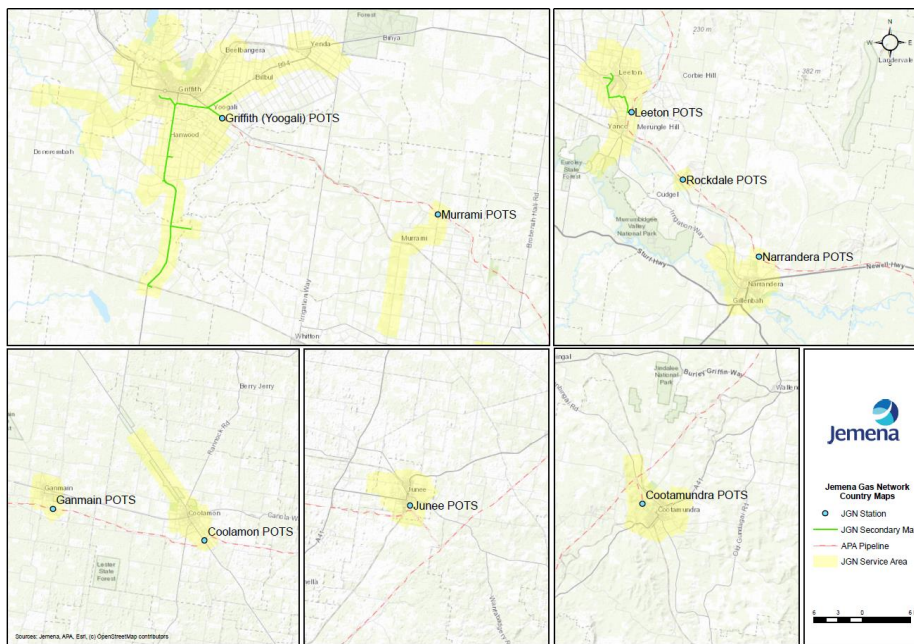
Last updated 1 December 2023

Figure 4: JGN Illawarra



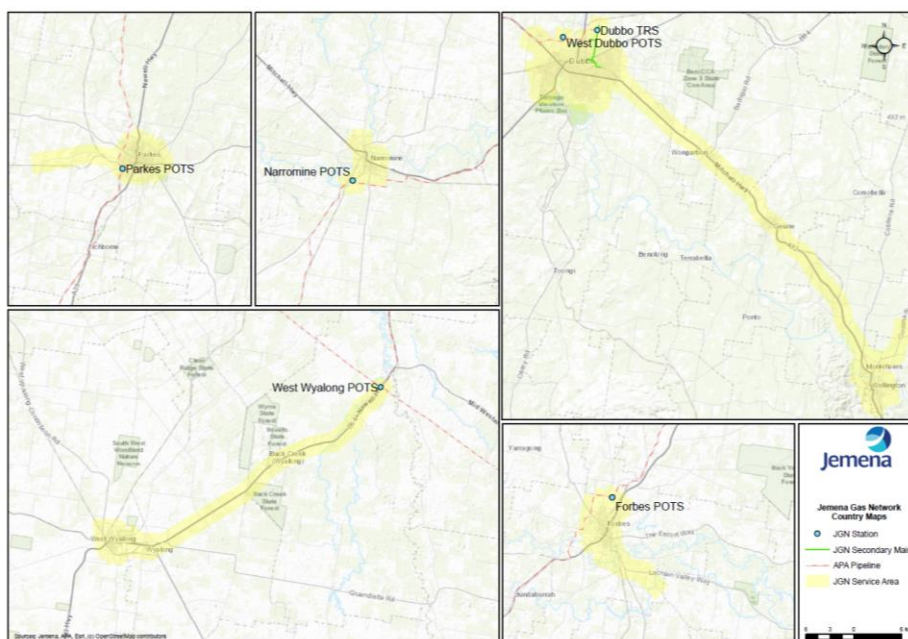
Last updated 1 December 2023

Figure 5: JGN Southern NSW



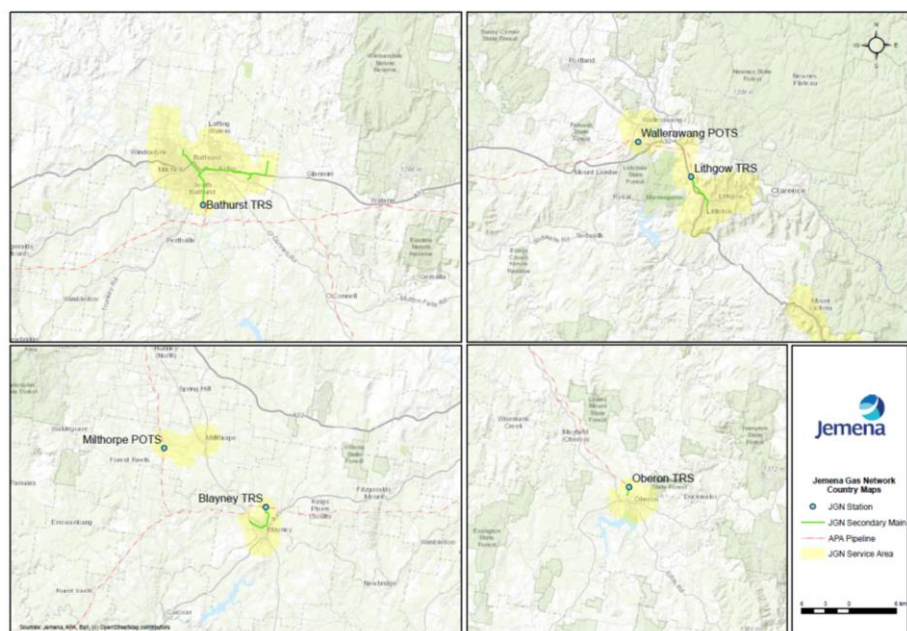
Last updated 1 December 2023

Figure 6: JGN Central West NSW



Last updated 1 December 2023

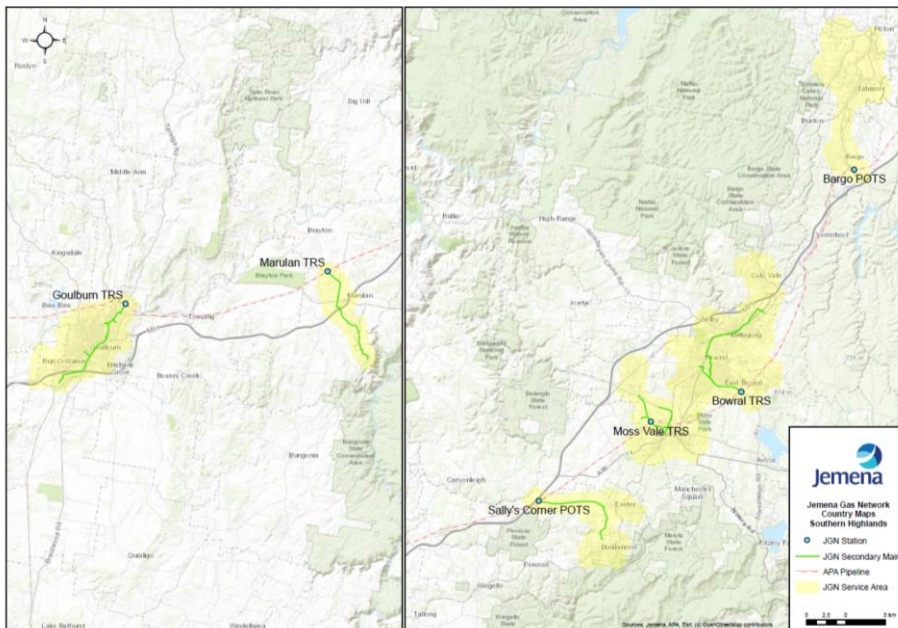
Figure 7: JGN Western NSW



Last updated 1 December 2023

Figure 8: JGN Western Slopes NSW

Last updated 1 December 2023

Figure 9: JGN Southern Highlands NSW

Last updated 1 December 2023

3.3 Rule 101B(2)(d) Any technical or physical characteristics of the pipeline that may affect access to or use of the pipeline or the price for pipeline services provided by means of the pipeline

With respect to JGN, relevant technical or physical characteristics of the pipeline are outlined in the JGN Access Arrangement, located at [Access Arrangement](https://www.jemena.com.au/siteassets/asset-folder/documents/gas/jgn-access-arrangement-2020-2025.pdf).¹ Additional relevant information is also contained in:

- a. Reference Service Agreement, [located here](https://www.jemena.com.au/siteassets/asset-folder/documents/documents/gas/rsa-03-june2020_clean_v2_approved-by-aer.pdf).²

¹ <https://www.jemena.com.au/siteassets/asset-folder/documents/gas/jgn-access-arrangement-2020-2025.pdf>

² https://www.jemena.com.au/siteassets/asset-folder/documents/documents/gas/rsa-03-june2020_clean_v2_approved-by-aer.pdf

- b. Curtailment Methodology, [to be completed once the rules relating to the National Energy Laws Amendment (Other Gases) Bill 2022 has been gazetted.]
- c. Interconnection Policy, [located here](#).³
- d. User Access Guide, located at [located here](#).

3.4 Rule 101B(2)(e) policies of the service provider that may affect access to or use of the pipeline or the price for pipeline services provided by means of the pipeline

The following policies of JGN that may affect access to or use of the pipeline or the price for pipeline services provided by means of the pipeline are as outlined below:

- a. Receipt or delivery point change requirements are outlined in Section 10 of the JGN Access Arrangement, located at [Access Arrangement](#).⁴
- b. Metering and measurement requirements are outlined in relevant sections of the JGN Access Arrangement, located at [Access Arrangement](#).
- c. Distribution pipeline balancing is covered by the following:
 - a. Currently, the Wilton Network Section is balanced via the Short Term Trading Market (**STTM**) mechanisms and rules administered by Australian Energy Market Organisation (**AEMO**).
 - b. At this time, Regional network sections do not require balancing as there is effectively only one receipt point per network section. The policy is that these sections are deemed to be in balance.
 - c. Upon the requirement for balancing in any network section, the policy will be adjusted to account for any additional receipt points.
- d. JGN does not have any queuing requirements as the AER have not notified JGN that they require queuing requirements.

3.5 Rule 101B (2)(f-h)

[To be completed once the rules relating to the National Energy Laws Amendment (Other Gases) Bill 2022 has been gazetted.]

³ <https://www.jemena.com.au/siteassets/asset-folder/documents/documents/gas/jgn-interconnection-policy-final-december-2023.pdf>

⁴ <https://www.aer.gov.au/system/files/JGN%20-%202020-25%20Access%20Arrangement%20-%20January%202020.pdf>

4. Part 10: Rule 101B(3) Service and access information

Rule 101B Service and access information

(3) The pipeline service information for a pipeline comprises a list of the pipeline services available on the pipeline and for each pipeline service:

- (a) a description of the service and any locational limitations on availability; and
- (b) the priority ranking of the service in relation to the other pipeline services including when scheduling and in the event of curtailment.

Under Rule 101B(3), pipeline service information includes a list of available services on the pipeline.

For each service, the JGN [Access Arrangement](#) provides a description, any location-based limitations on availability, and a priority ranking compared to other services for scheduling and curtailment purposes. (note this is specific to the prioritisation of levels of services offered and is not related to the curtailment of receipt points as outlined in the Curtailment Methodology).

4.1 Rule 101B(3)(a) Service description and locational limitations

The service description for each of JGN's pipeline services can be found in the following documents:

- a. Reference Service
 - Reference Service – see Section 2, clause 2.2 of JGN's [Access Arrangement](#)⁵
- b. Non-reference Services
 - Interconnection service – see Section 2, clause 2.5 of JGN's [Access Arrangement](#)
 - Negotiated service – see Section 2, clause 2.6 of JGN's [Access Arrangement](#)

The availability of Reference Service is limited to Delivery Points which meet the below criteria:

- I. received a Reference Service under the 2015-20 Access Arrangement, or
- II. for Delivery Points expected to consume less than 10TJ p.a. they are served from the Network where the maximum allowable operating pressure is less than or equal to 500 kPa, or
- III. for Delivery Points expected to consume more than 10TJ p.a. they are served from the Network where the maximum allowable operating pressure is less than or equal to 1050 kPa.

There are no locational limitations on the non-reference services.

4.2 Rule 101B(3)(b) Priority ranking of services

Unless incorporated into the outcome of a Negotiated Service (e.g. an interruptible agreement under the Negotiated Service etc.) or tariff (for those grandfathered under a First Response Tariff) there is no priority of ranking of services offered by JGN.

⁵ <https://www.jemena.com.au/siteassets/asset-folder/documents/gas/jgn-access-arrangement-2020-2025.pdf>

5. Part 10: Rule 101B(4) Service and access information

Rule 101B Service and access information

(4) The service usage information for a pipeline for a month comprises:

- (a) for a transmission pipeline *(Not applicable to JGN's distribution pipelines)*
- (b) subject to subrule (6), for each entry and exit point on a large distribution pipeline that is owned, operated or controlled by the service provider or for which the service provider holds the information:
 - (i) daily flow data; and
 - (ii) where a meter is installed at the relevant entry or exit point, the hourly flow data; and
 - (iii) minimum inlet and minimum outlet pressures over each hour; and
 - (iv) a static table or chart showing the maximum flow rate of the entry or exit point against pressure.

The requirements for 101B(4)(b)(i), 101B(4)(b)(ii) and 101B(4)(b)(iii) are all contained within the same downloadable monthly spreadsheets as outlined below.

5.1 Rule 101B(4)(b)(i) daily flow data

Daily flow data is provided in the Excel spreadsheets that can be downloaded at: <https://www.jemena.com.au/gas/jemena-gas-network/jgn-service-and-access-information/> (see the 'Related Resources' section).

The daily data is provided except where:

1. The meter installation does not have the capability of provision of daily (or hourly) data;
2. The flow data would compromise 'commercial-in-confidence' information for an End User;
3. Metering information is unavailable due to operational or technical reasons.

5.2 Rule 101B(4)(b)(ii) hourly flow data

Hourly flow data is provided in Excel spreadsheets that can be downloaded at: <https://www.jemena.com.au/gas/jemena-gas-network/jgn-service-and-access-information/> (see the 'Related Resources' section).

The hourly data is provided except where:

1. The meter installation does not have the capability of provision of hourly data;
2. The flow data would compromise 'commercial-in-confidence' information for an End User;
3. Metering information is unavailable due to operational or technical reasons.

5.3 Rule 101B(4)(b)(iii) minimum inlet and minimum outlet pressures over each hour

Minimum inlet and minimum outlet pressures over each hour is provided in monthly Excel spreadsheets that can be downloaded here: <https://www.jemena.com.au/gas/jemena-gas-network/jgn-service-and-access-information/> (see the 'Related Resources' section).

The daily data is provided except where:

1. The installation does not have the capability of provision of hourly data;
2. The data would compromise 'commercial-in-confidence' information for an End User;
3. Information is unavailable due to operational or technical reasons.

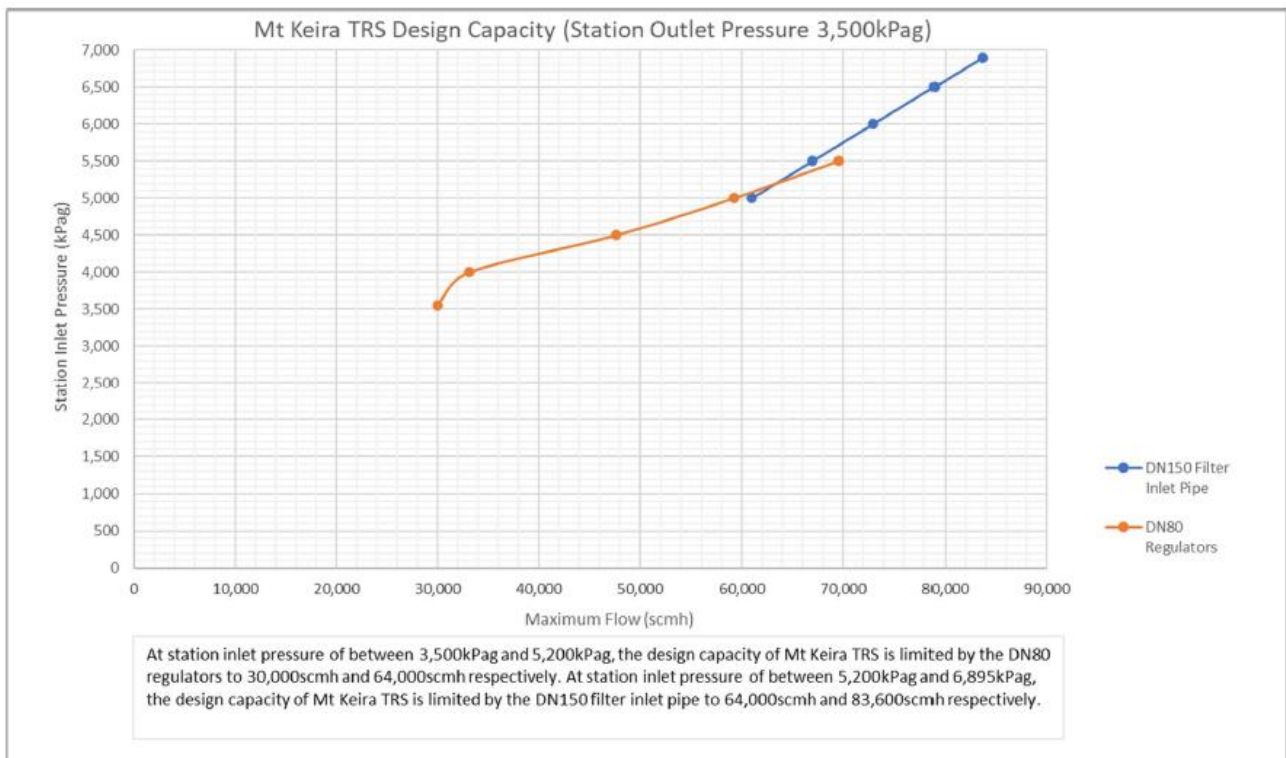
5.4 Rule 101B(4)(b)(iv) static table or chart showing the maximum flow rate of the entry or exit point against pressure

The charts below contain the relevant maximum flow rates of entry or exit points against pressure. As all entry points onto the large distribution pipelines are owned, operated and controlled by parties other than JGN. JGN does not hold the information required under Rule 101B(4)(b)(iv) for any of those entry points.

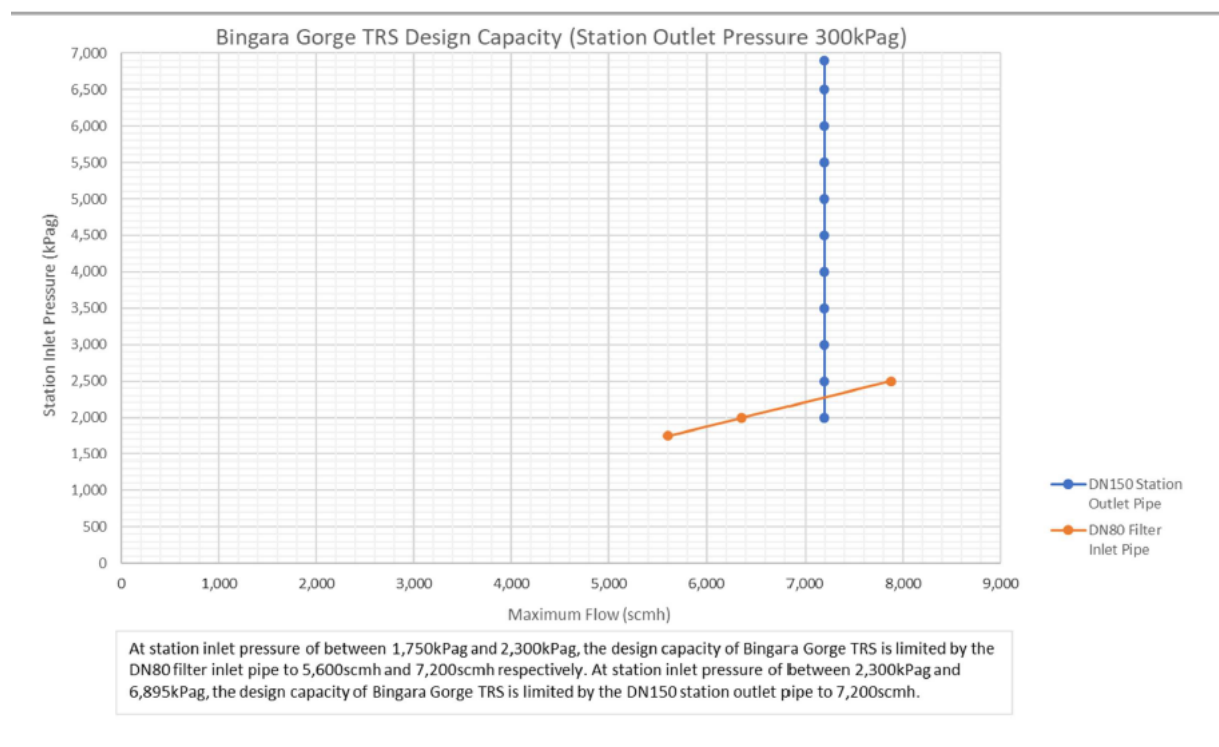
For all exit points from the large distribution pipelines which are owned, operated or controlled by JGN, the static charts are provided. Where JGN does not own, operate or control an exit point, JGN does not hold the required information for it and therefore this information is not published by JGN.

These charts were last updated in December 2023.

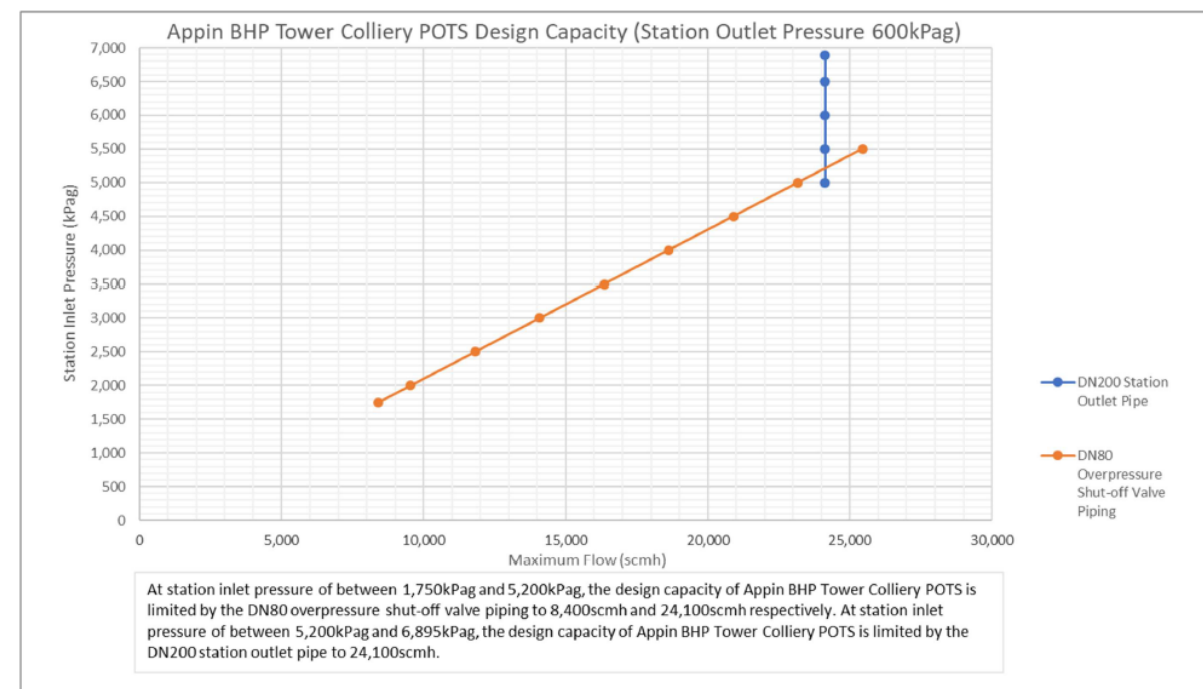
5.4.1 Southern Trunk (License 2) Mt Keira TRS



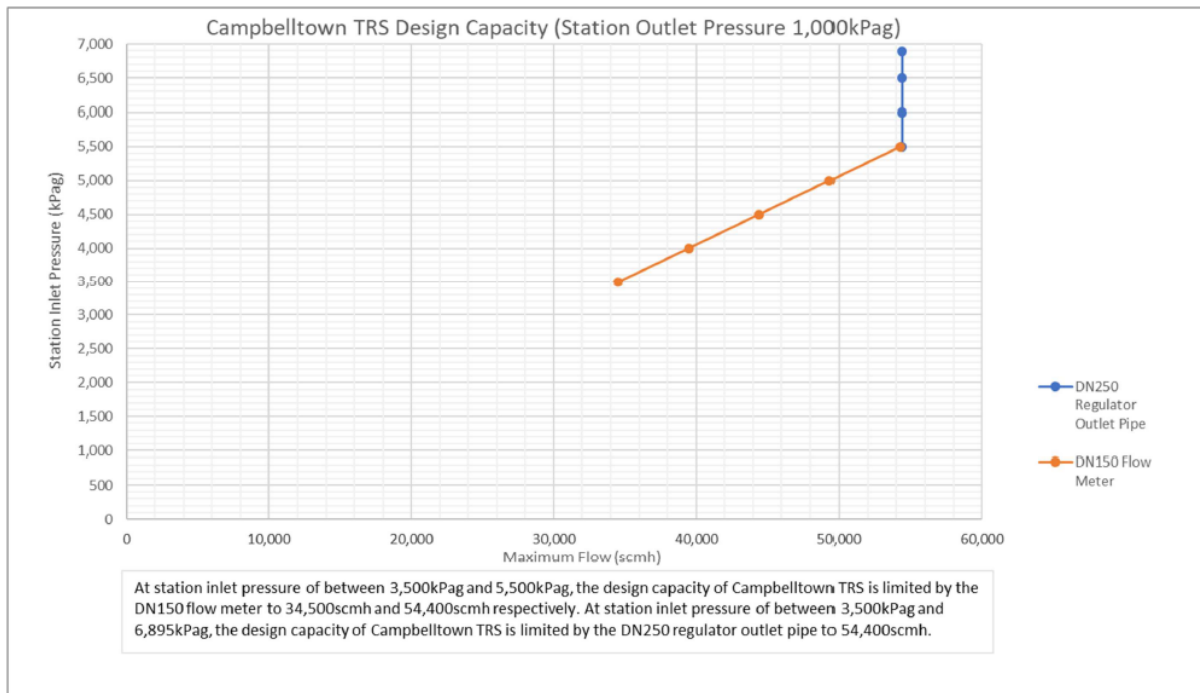
5.4.2 Central Trunk (License 1) Bingara Gorge TRS



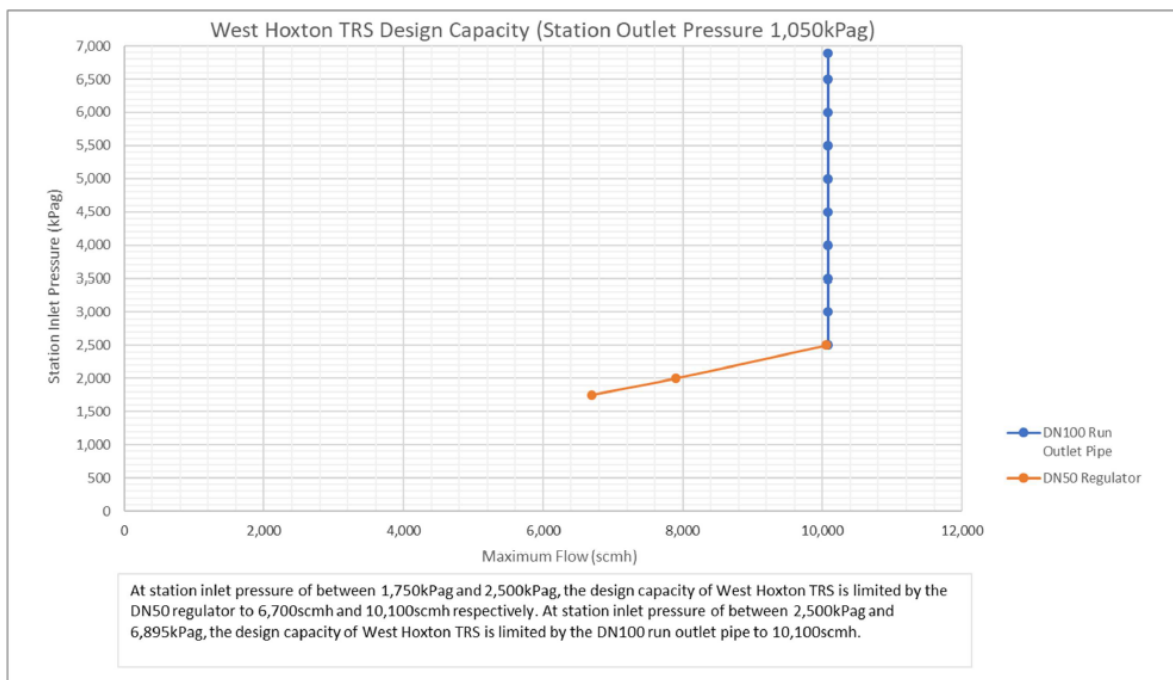
5.4.3 Central Trunk (License 1) Appin BHP Tower Colliery POTS



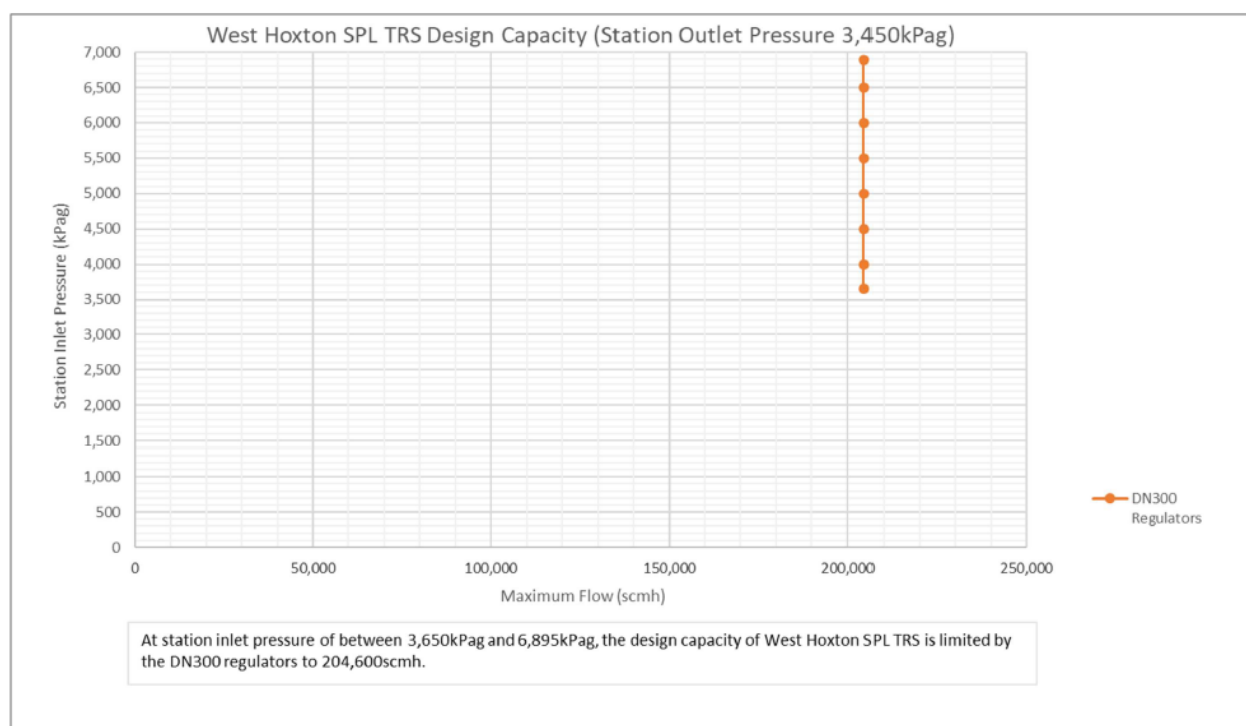
5.4.4 Central Trunk (License 1) Campbelltown TRS



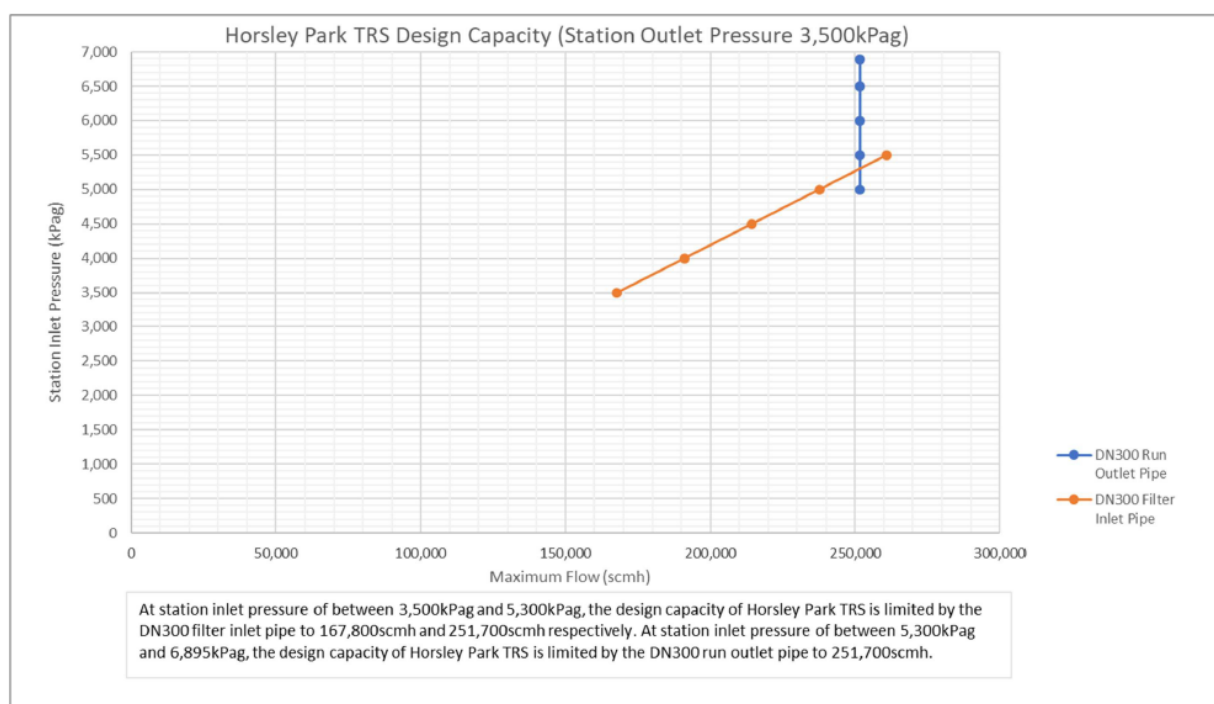
5.4.5 Central Trunk (License 1) West Hoxton TRS



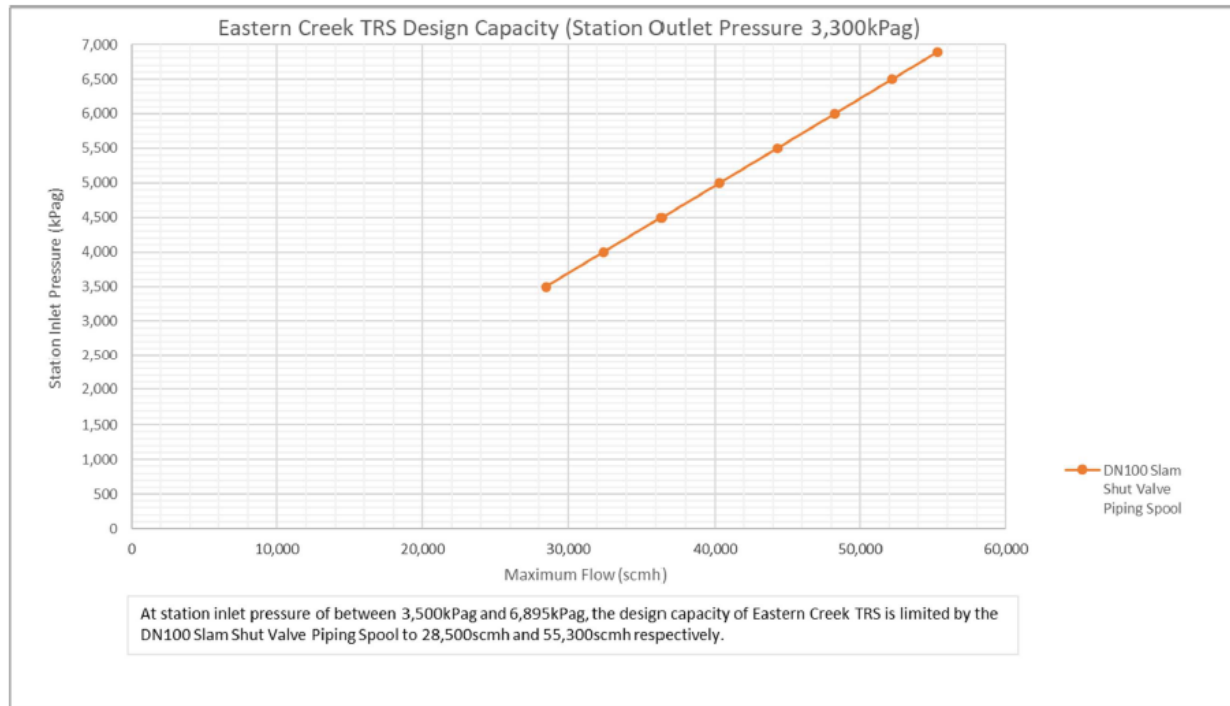
5.4.6 Central Trunk (License 1) West Hoxton SPL TRS



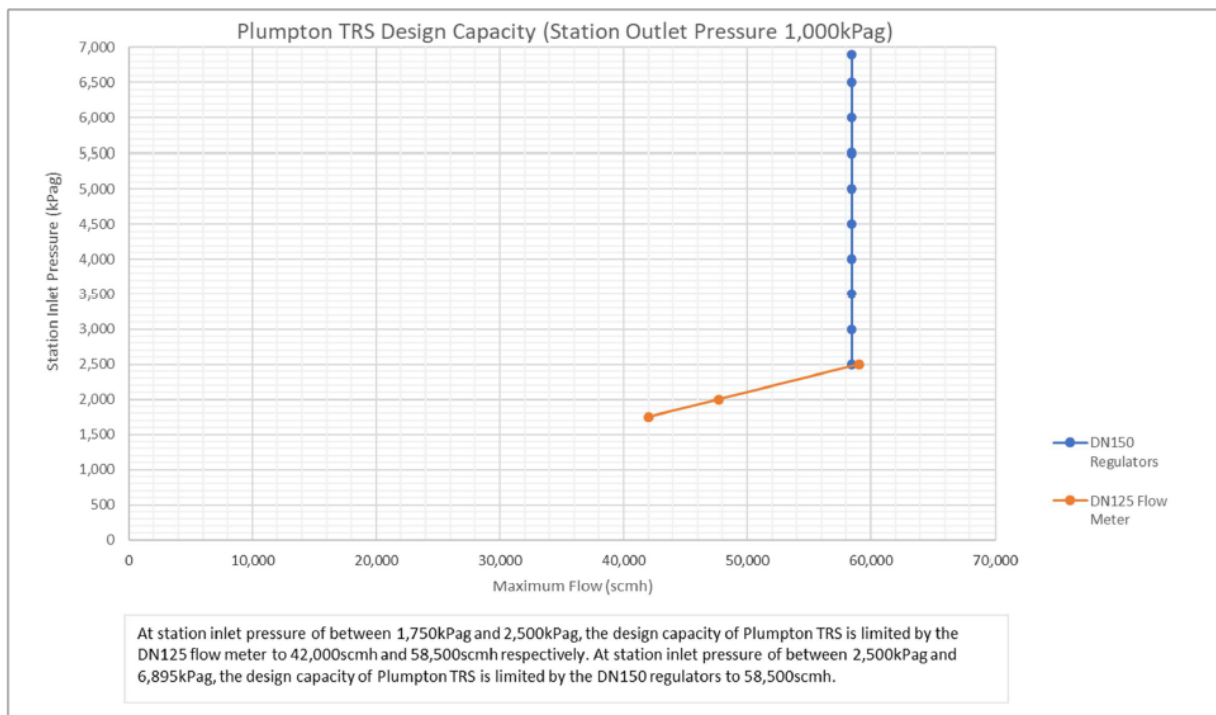
5.4.7 Central Trunk (License 1) Horsley Park TRS



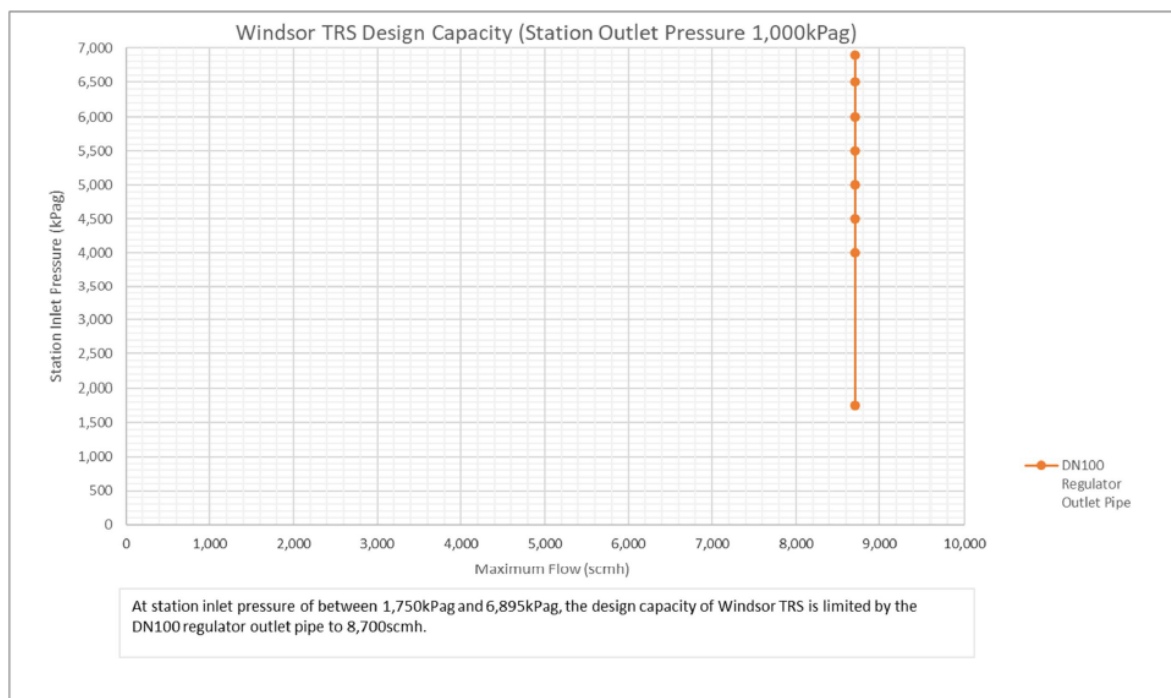
5.4.8 Northern Trunk (License 3, 7, 8) Eastern Creek TRS



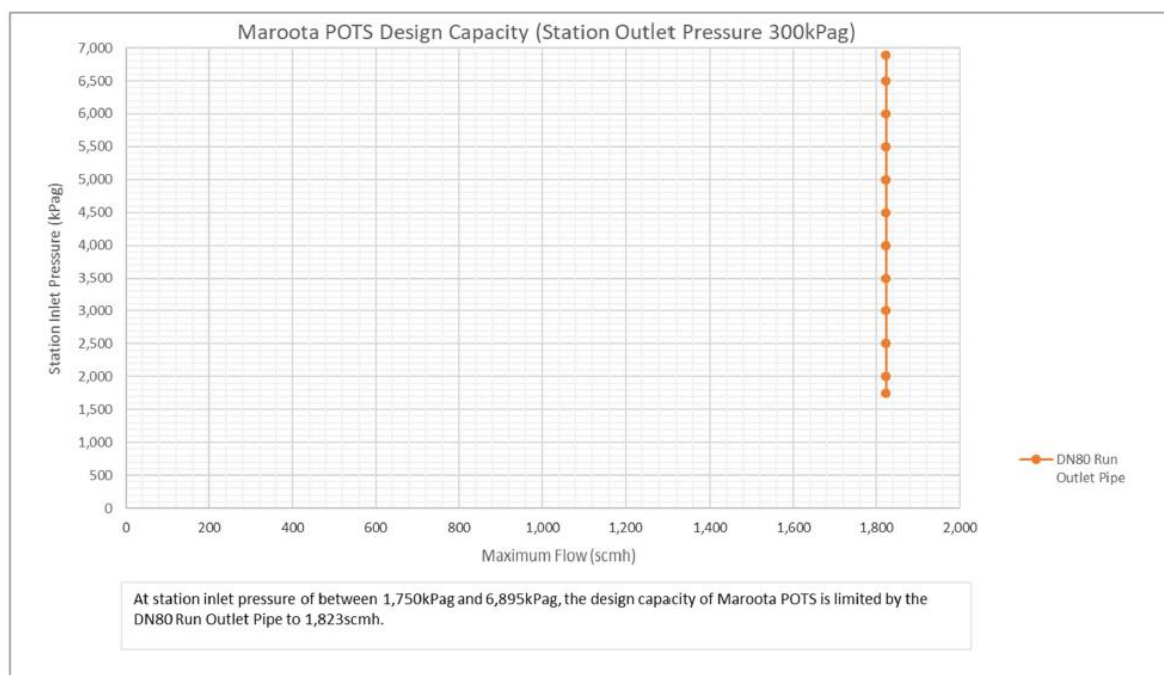
5.4.9 Northern Trunk (License 3, 7, 8) Plumpton TRS



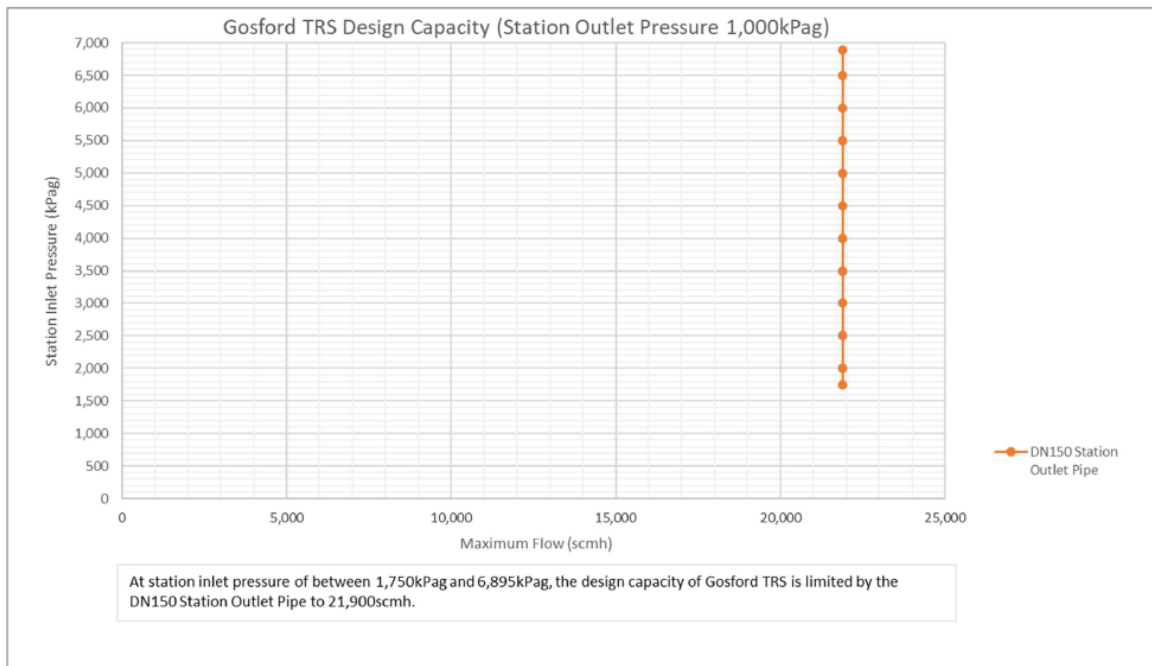
5.4.10 Northern Trunk (License 3, 7, 8) Windsor TRS



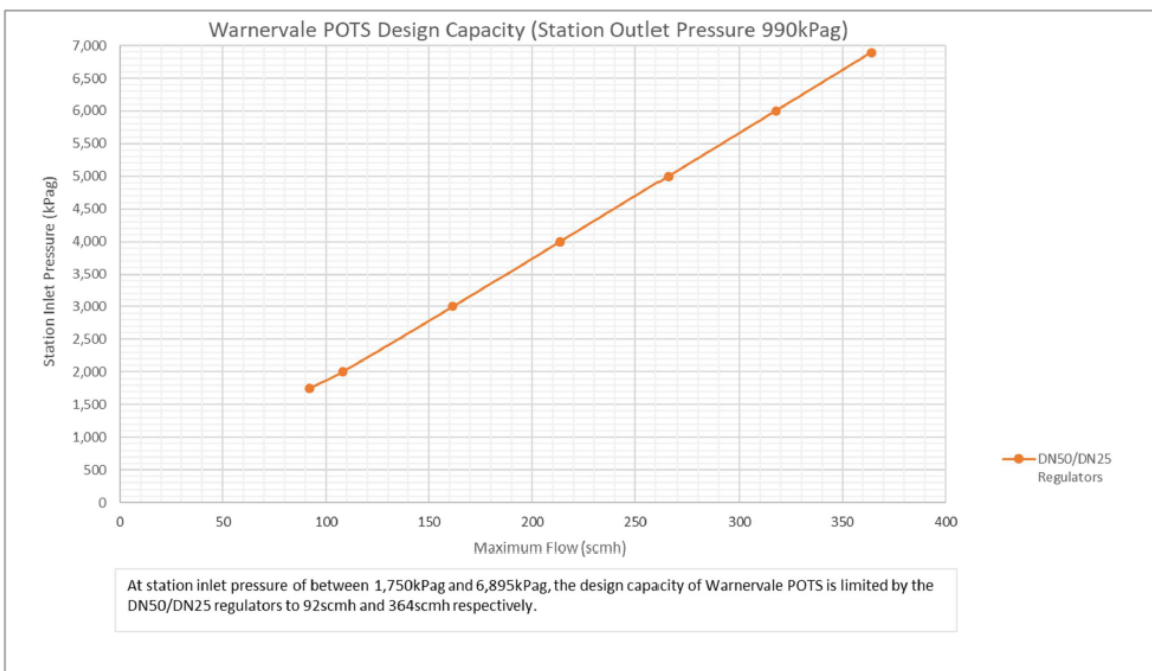
5.4.11 Northern Trunk (License 3, 7, 8) Maroota POTS



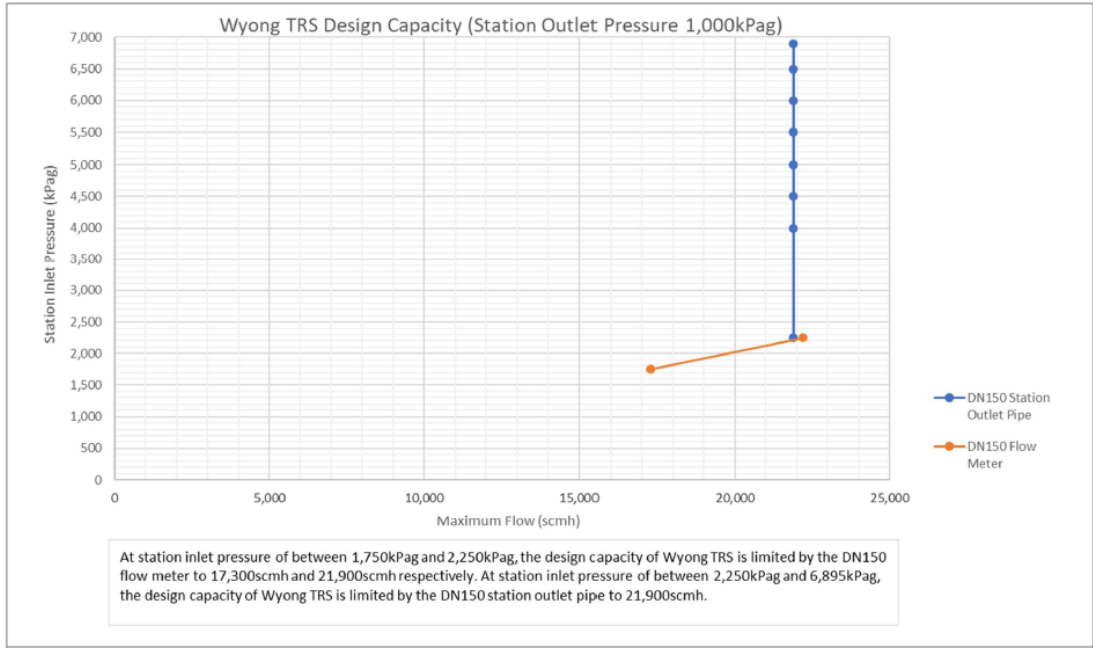
5.4.12 Northern Trunk (License 3, 7, 8) Gosford TRS



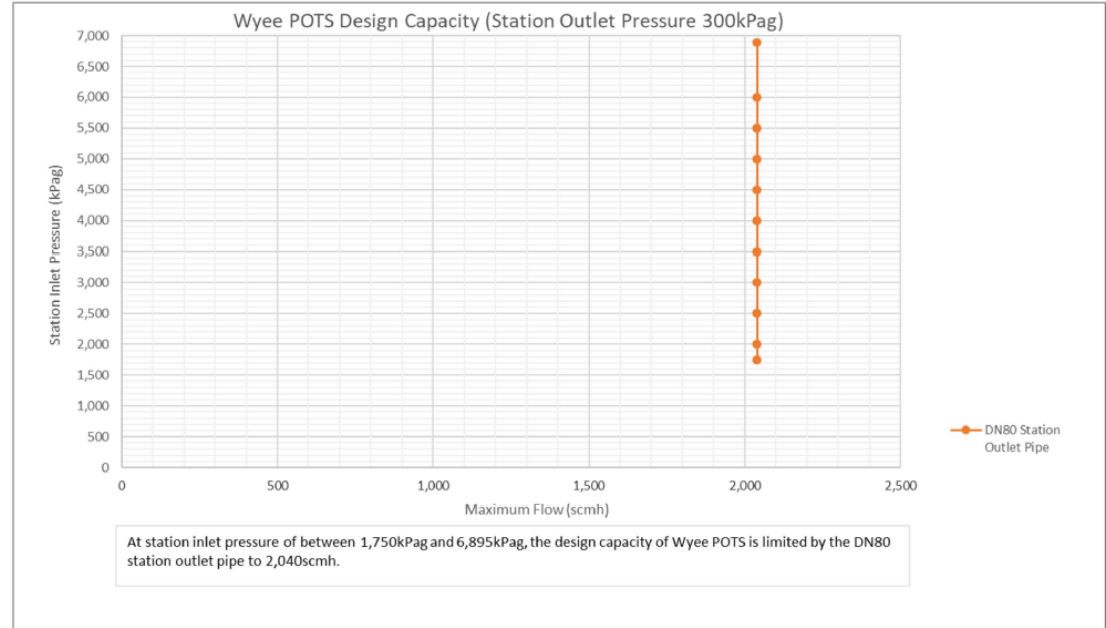
5.4.13 Northern Trunk (License 3, 7, 8) Warnervale POTS



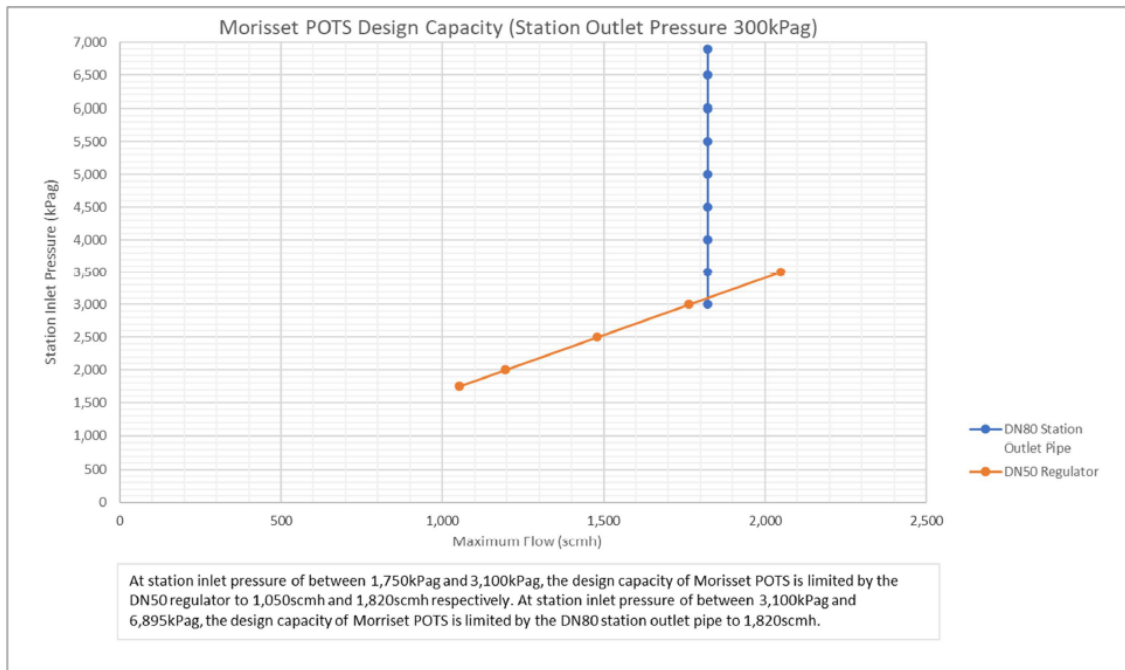
5.4.14 Northern Trunk (License 3, 7, 8) Wyong TRS



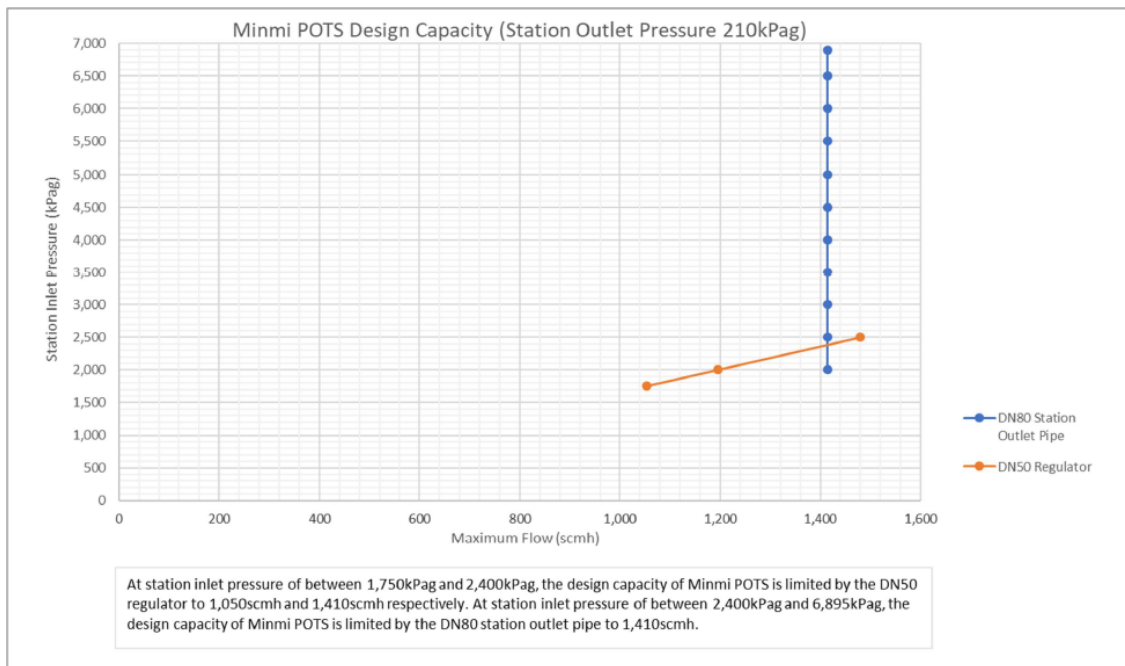
5.4.15 Northern Trunk (License 3, 7, 8) Wyee POTS



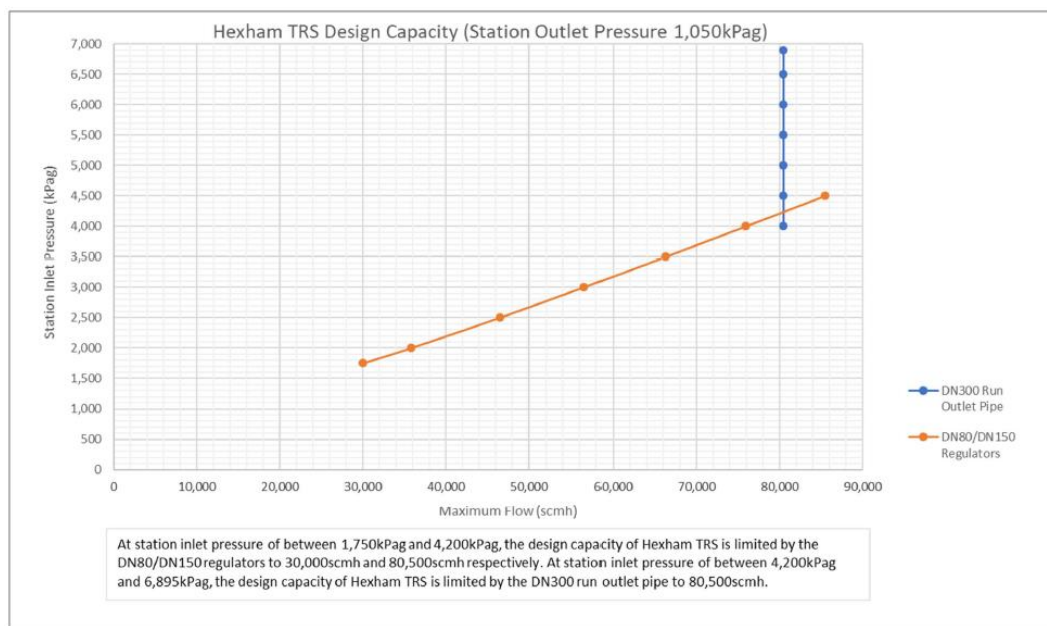
5.4.16 Northern Trunk (License 3, 7, 8) Morisset POTS



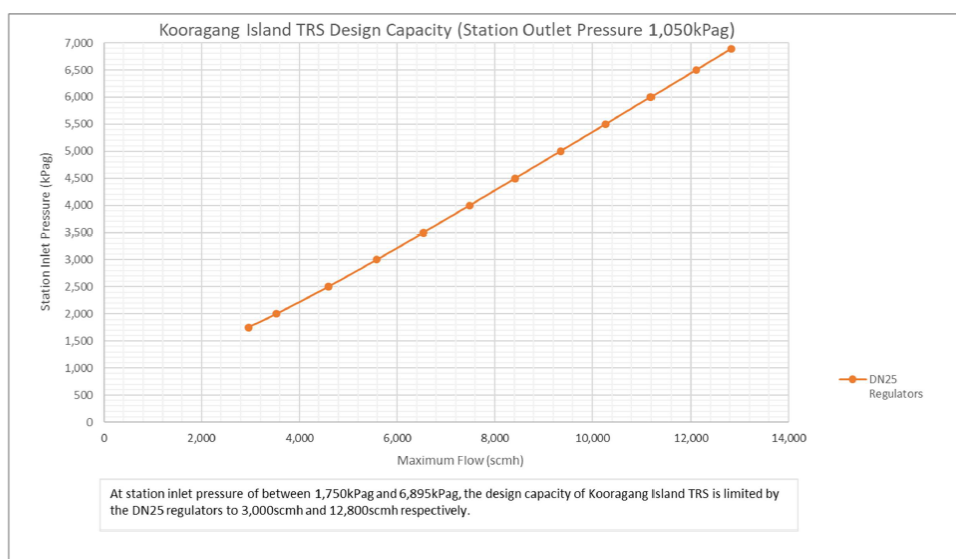
5.4.17 Northern Trunk (License 3, 7, 8) Minmi POTS



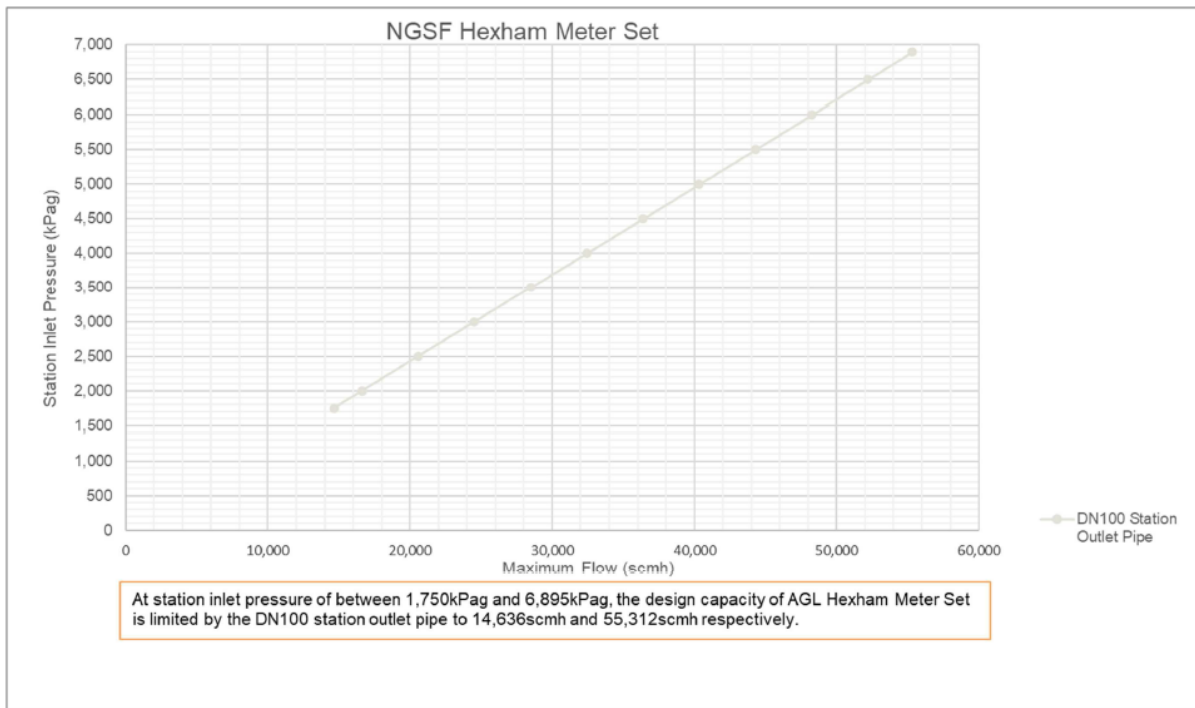
5.4.18 Northern Trunk (License 3, 7, 8) Hexham TRS



5.4.19 Northern Trunk (License 3, 7, 8) Kooragang Island TRS



5.4.20 Northern Trunk (License 3, 7, 8) NGSF Hexham Meter Set



6. Part 10: Rule 101B(5) Service and access information

Rule 101B Service and access information

(5) The service availability information for a pipeline for a month comprises:

- (a) an outlook of the firm capacity of the pipeline that the service provider has available for sale or that it will have available for sale for each month in the following 36 month period; and
- (b) information about matters expected to affect the capacity of the pipeline (including any planned expansions of the capacity) for each month in the following 12 month period, including:
 - (i) the expected start and end dates of the matters expected to affect the capacity of the pipeline; and
 - (ii) a description of the matters expected to affect the capacity of the pipeline; and
 - (iii) the expected capacity of the pipeline during the period it is affected by the matters referred to in subparagraphs (i) and (ii); and
- (c) information on any other limitations on the availability of the pipeline services identified in the pipeline service information.

Rule 101B(5) requires service availability information for a pipeline, including:

- The outlook on firm capacity for each month in the next 36 months;
- Any expected factors affecting capacity for each month in the next 12 months, including start and end dates, descriptions, and projected capacity during the affected period;
- Information on other limitations or constraints on pipeline service availability identified in the pipeline service information.

Note: the below relates to JGN's 'large distribution pipelines'.⁶

6.1 Rule 101B(5)(a) Outlook on firm capacity for each month in the next 36 months

Table 2 sets out the current maximum operating capacity for the large distribution pipelines under normal operating conditions. The firm capacity that is, or would, be available for sale in any month is subject to a number of matters including our obligation to meet delivery commitments to all Network users and customers, and the actions by third parties in relation to injection of gas into the Network. These delivery commitments vary on a daily, monthly and annual basis as customers join or leave the Network, or change their gas consumption patterns. Actual daily and monthly flow data, and hourly flow data where available, is published on our website at <https://www.jemena.com.au/gas/jemena-gas-network/jgn-service-and-access-information/> (see the 'Related Resources' section), providing information about historical volumes delivered through the large distribution pipelines in each month.

⁶ **large distribution pipeline** means a distribution pipeline or part of a distribution pipeline that is a scheme pipeline and has a maximum daily capacity under normal operating conditions greater than or equal to 10 TJ/day and a maximum pressure capability under normal operating conditions greater than 4 MPa (see Part 10 of the National Gas Rules).

Table 2: Maximum operating capacity for large distribution pipelines

| Large Distribution Pipeline | Maximum daily flow under normal operating conditions | Maximum daily flow under normal operating conditions |
|-----------------------------|--|--|
| Wilton - Wollongong | 29 TJ/day | 31,000 scmh or 1,200 GJ/hr |
| Wilton - Newcastle | 362 TJ/day | 531,000 scmh or 20,500 GJ/hr |

Last updated 1 December 2023

6.2 Rule 101B(5)(b) Matters affecting capacity for each month in the next 12 months

If there are any matters expected to affect the capacity of a large distribution pipeline⁷ for any month, that information will be separately published on our website at <https://www.jemena.com.au/globalassets/231124-spreadsheet-rule-101b5b-capacity-matters.xlsx>

6.3 Rule 101B(5)(c) Other limitations or constraints on pipeline service availability

If there are any matters expected to affect the capacity of a large distribution pipeline for any month, that information will be separately published on our website at <https://www.jemena.com.au/globalassets/231124-spreadsheet-rule-101b5b-capacity-matters.xlsx>

⁷ From NGR Part 10 100A, a large distribution pipeline means a distribution pipeline or part of a distribution pipeline that is a scheme pipeline and has a maximum daily capacity under normal operating conditions greater than or equal to 10 TJ/day and a maximum pressure capability under normal operating conditions greater than 4 MPa.

7. Part 10: Rule 101C Standing terms

Rule 101C Standing terms

(1) The service provider for a pipeline must publish:

- (a) standing terms for each pipeline service on the pipeline in accordance with subrule (2); and
- (b) the methodology used to calculate the standing price referred to in subrule (2)(b), the inputs used in the calculation of the standing price and any other information specified in the pipeline information disclosure guidelines.

(2) The standing terms must in each case include:

- (a) the standard terms and conditions applicable to each pipeline service; and
- (b) the standing price, being the price applicable to each pipeline service under the terms and conditions referred to in paragraph (a); and
- (c) other information about prices and charges applicable to each pipeline service including the charging structure for the pipeline service, any minimum charge and any additional charges such as imbalance or overrun charges.

7.1 Rule 101C(1) Standing terms

JGN offers three pipeline services:

1. A Reference Service;
2. An Interconnection Service; and
3. A Negotiated Service.

The standing terms for the Reference Service can be found in the [Reference Service Agreement](#)⁸ approved by the AER as part of JGN's Access Arrangement.

The standing terms for the Interconnection Service are published as part of the Interconnection Policy.

By definition, any Negotiated Service does not have any Standard Terms and Conditions and, therefore, no standing terms have been published for the Negotiated Service. This applies to the process for the determination of a Negotiated Service and thus the methodology for the preparation of a Negotiated Service is determined through direct liaison with JGN.

⁸ https://www.jemena.com.au/siteassets/asset-folder/documents/documents/gas/rsa-03-june2020_clean_v2_approved-by-aer.pdf

8. Part 10: Rule 101D Financial information, historical demand information and cost allocation methodology

Rule 101D Financial information, historical demand information and cost allocation methodology

(1) A service provider for a pipeline must prepare and publish on its website:

(a) financial information and historical demand information for each of its pipelines, which must:

(i) be in the form and contain the information specified in the pipeline information disclosure guidelines; and

(ii) be certified in the manner provided for in the pipeline information disclosure guidelines; and

(b) the cost allocation methodology used for each of its pipelines, which must comply with the cost allocation principles set out in the pipeline information disclosure guidelines.

(2) To avoid doubt, the relevant adjudicator, in making an access determination, is not bound by financial information, historical demand information or the cost allocation methodology published under this rule or by any methods, principles or inputs that have been used to calculate information published under this rule.

The information required under Rule 101D will be published later in 2024.

9. Part 10: Rule 101E Actual prices payable information

Rule 101E Actual prices payable information

(1) A service provider must publish the following information for each pipeline service that a user has procured under an access contract with the service provider:

- (a) the pipeline by means of which the pipeline service is provided; and
- (b) the date the access contract was entered into or varied (as the case requires); and
- (c) the service term (start and end dates); and
- (d) the pipeline service type (for example, forward haul, backhaul, interconnection, park and loan); and
- (e) the priority given to the pipeline service (such as firm, as available or interruptible); and
- (f) the contracted quantity for the pipeline service expressed, where relevant, as:
 - (i) the maximum daily quantity (in GJ/day); and
 - (ii) the maximum hourly quantity (in GJ/hour); and
- (g) for a transmission pipeline [not applicable];
- (h) whether the pipeline service is provided on the same or substantially the same non-price terms as those set out in the standing terms published for the pipeline under rule 101C(1)(a); and
- (i) the price structure applicable to the pipeline service (for example whether it is a fixed price or a variable price or a combination of the two); and
- (j) the prices payable for the service as set out in the contract (excluding any amount on account of GST); and
- (k) for services other than interconnection services, if a price provided under paragraph (j) is not expressed as \$/GJ/day or, if relevant, \$/GJ, that price converted into \$/GJ/day or \$/GJ, together with an explanation about how the conversion has been made; and
- (l) a description of any price escalation mechanism applicable to the prices payable for the service.

(2) A service provider must update the information published under subrule (1) if the information is no longer accurate due to a variation to the terms of the access contract between the service provider and the user.

(3) A scheme pipeline service provider is not required to comply with subrule (1) in relation to users of reference services specified in an approved access arrangement if the service provider:

- (a) publishes on its website information about the number of users using each reference service; and
- (b) updates that information whenever there is a variation to that number.

(4) A service provider is not required to comply with subrule (1) where a user's total pipeline capacity right under one or more access contracts with the service provider by means of the same pipeline is less than 10 TJ of natural gas per annum.

JGN publishes on its website information about the number of users using each reference service and updates that information whenever there is a variation to that number and thus, in accordance with Rule 101E(3), is not

required to comply with subrule (1) for users of reference services. JGN currently only has one user procuring pipeline services under a Negotiated Service.

9.1 Rule 101E(1) Actual prices – Non-Reference Services

| Rule | Requirement | Contract 1 |
|------------|---------------------------------|--|
| 101E(1)(a) | Source Pipeline | JGN |
| 101E(1)(b) | Date of contract | 7 January 2008 |
| 101E(1)(c) | Term | Evergreen |
| 101E(1)(d) | Service Type | Negotiated |
| 101E(1)(e) | Service Priority | N/A |
| 101E(1)(f) | Contracted Quantity – GJ/day | N/A |
| | Contracted Quantity – GJ/hour | N/A |
| 101E(1)(g) | N/A | |
| 101E(1)(h) | Comparison of terms to Standard | N/A an equivalent service is not offered elsewhere |
| 101E(1)(i) | Price Structure | \$ p.a. |
| 101E(1)(j) | Price Payable (excl. GST) | \$109,852.21 |
| 101E(1)(k) | Price as \$/GJ | N/A ⁹ |
| 101E(1)(l) | Price Escalation Method | Escalates in line with metering charges under JGN's AA |

9.2 Rule 101E(2) User information – Updates

JGN updates the information published under subrule (1) if the information is no longer accurate due to a variation to the terms of the access contract between the service provider and the user.

9.3 Rule 101E(3) User information – Reference Services

Please refer to JGN's website for information about the number of users using each reference service, as well as updates for that information whenever there is a variation to that number.

⁹ The charge is not based on consumption, so converting to \$/GJ basis is not practical. The Agreement levies a flat annual charge regardless of consumption.